

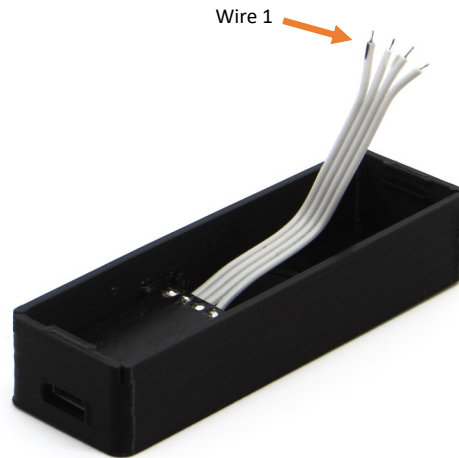


vSFX Installation Guide v1.1

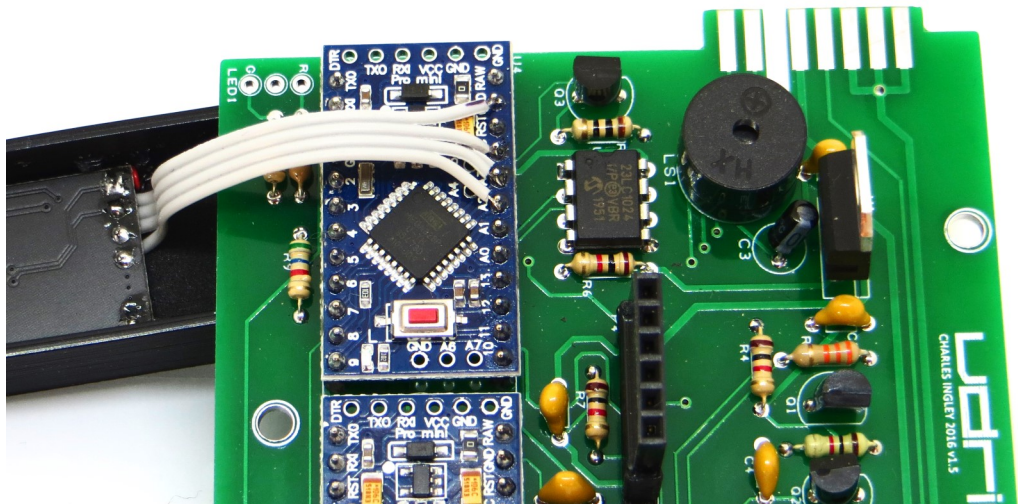
The vSFX module will add sound effects to your vDrive. The module has a small printed circuit board and miniature speaker that is housed in a 3D printed housing which replaces the existing cosmetic cover. The vSFX has a micro USB connector which enables custom sounds to be added (please see the latest user manual for more information).

This guide provides instructions on how to fit a the vSFX module to an existing vDrive. To do so will require basic soldering skills and should be considered an easy project.

1. First update your vDrive to the latest firmware version (005 or higher).
2. Remove the vDrive from its case. Be careful with the LED wires as they are prone to break with undue twisting.
3. Remove the existing cosmetic cover (with VDRIVE engraved on the top). It may be glued but gentle persuasion should be all that's required to shift it.
4. Take the vSFX assembly and identify the orientation of the four connecting wires. Wire 1 is marked with a short black stripe.

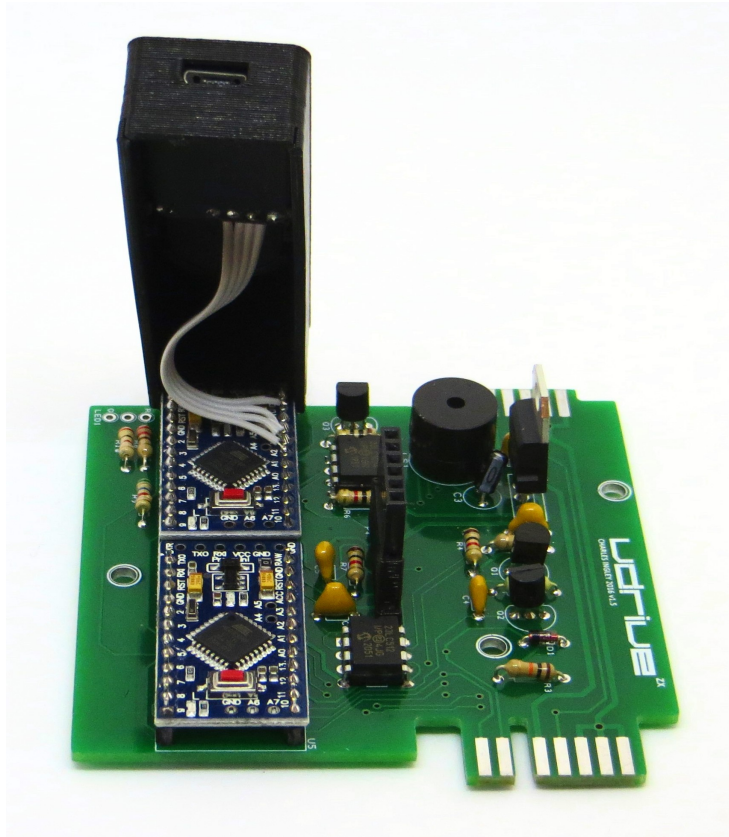


4. Connect the 4 wires to the left hand microcontroller module (U4) as follows:
 - i. Wire 1: GND
 - ii. Wire 2: VCC
 - iii. Wire 3: A3
 - iv. Wire 4: A2

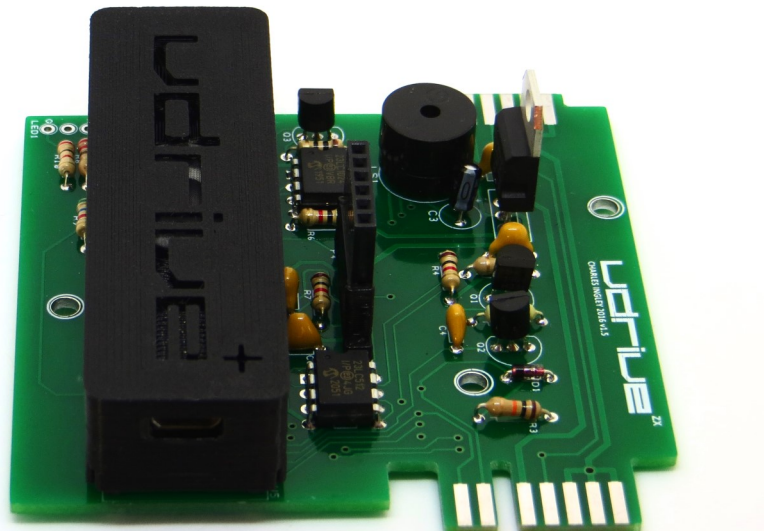


5. Position the vSFX module as shown below and then press down into place so that it clips onto the two microcontrollers.

Note: Over the 5 year history of the vDrive there have been several microcontroller board manufacturers and for some the cover will be loose and need gluing while others will be tight and require some filing or cutting of the small plastic protrusions at one or both ends of the cover. Care will be needed if adjustments are required.



6. Your vDrive should now look like this.



6. Before reassembling the vDrive in it's case, test that the vSFX module is installed properly by connecting the vDrive to the host computer and confirm that sounds are heard when accessing images (just a simple CAT will do). The toolkit command .VINFO will also provide status of the current sound configuration. Please see the user manual for more detailed information.
7. Reassemble the vDrive in it's case and you're done.